

C- CHANNEL DESCRIPTION 2.0" gCRC CHANNEL/8'-0" LONG 0.0625" THK.	
ATI REPORT NO: A2283.01-106-31	
ASTM RATING ASTM C 635/C635M-07	REF. STANDARD NYC RS-5 SECTION 16

Suspension Assembly		Peak Supported Area (ft ²) ₅	Peak Allowable Deflection (in)	Estimated Maximum Loading Values ⁶	
System	Reinforcement			Load Prior to Deflection Limit (lb/ft ²)	Ultimate Failure Load (lb/ft ²)
Caddy Clip / Pencil Rod	None	27.0	0.60	2.7	4.1
	Chicago Bars			8.0	8.8
3/8 in Bolt / 1 in Steel Strap	None	27.0	0.60	2.9	4.0
	Chicago Bars			8.8	8.8

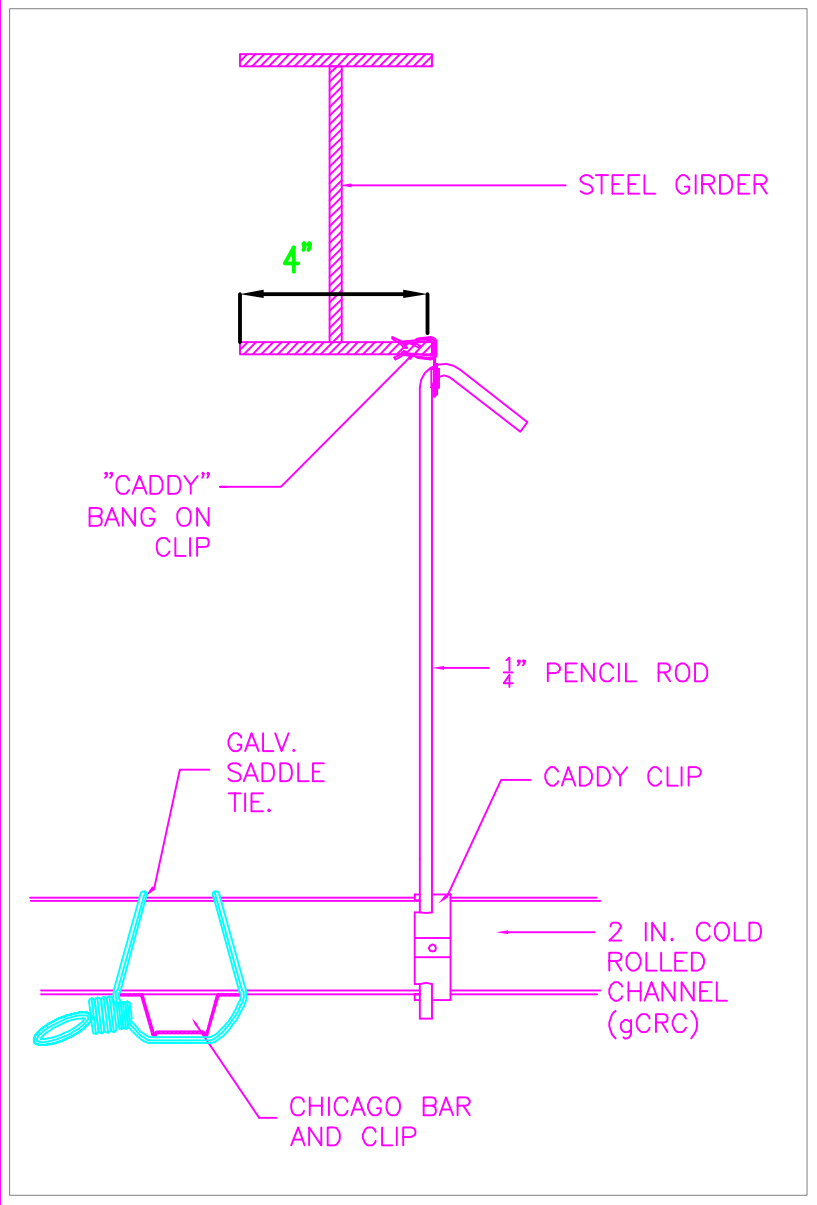
⁵ The Peak Supported Area value assumes a horizontally reinforced parallel carrying channel hanging arrangement supported at 72.0 in. intervals with a span of 54.0 in. separating individual carrying channels (3888 in² area).

⁶ Area-Load Values are ESTIMATED based on the experimentally determined mean values determined in accordance with RS5-16 for the above tested section length and reinforcement condition distributed over the maximum potential tributary area of the suspension systems.

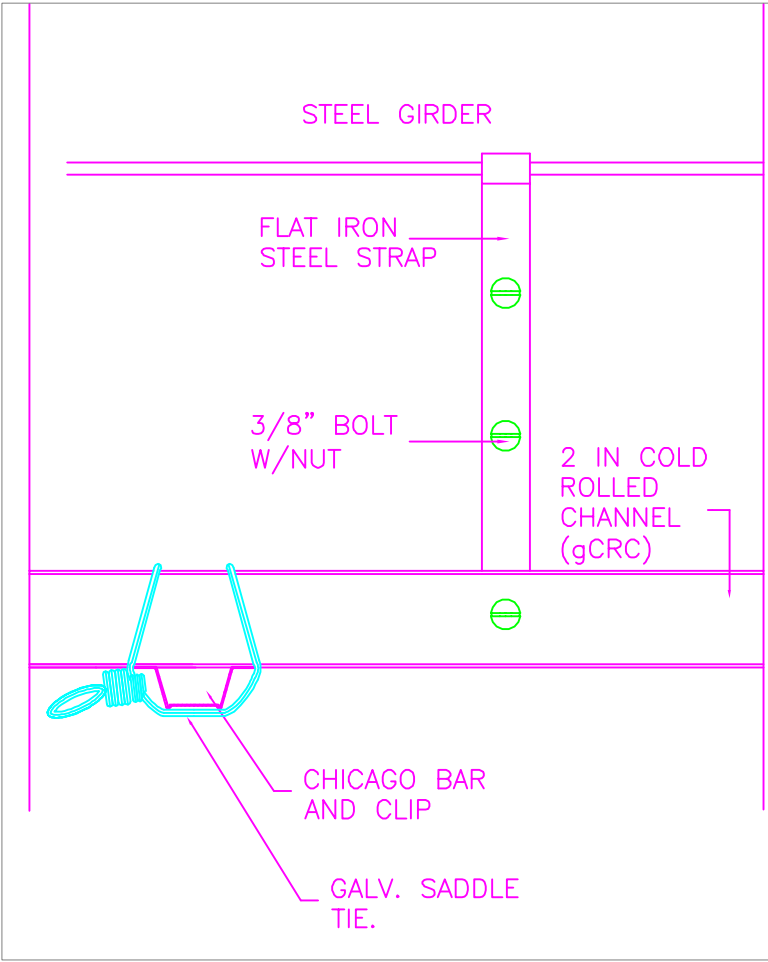
Suspension Assembly		Tested Length (in)	L/360 Deflection Load (lbs/ linear foot) ¹	Load at Yield (lbs/ linear foot)	Duty Class ²
System	Reinforcement				
Caddy Clip / Pencil Rod	None	72.0 on center	8.7	18.5	Heavy
	Chicago Bars				
3/8 in Bolt / 1 in Steel Strap	None	72.0 on center	8.5	17.8	Heavy
	Chicago Bars				

¹ L/360 values/linear foot obtained a mean safety factor of 2.1 for the unreinforced Clip assembly, 3.2 for the reinforced Clip assembly, 2.1 for the unreinforced Bolt assembly and 2.5 for the reinforced Bolt assembly prior to ultimate failure.

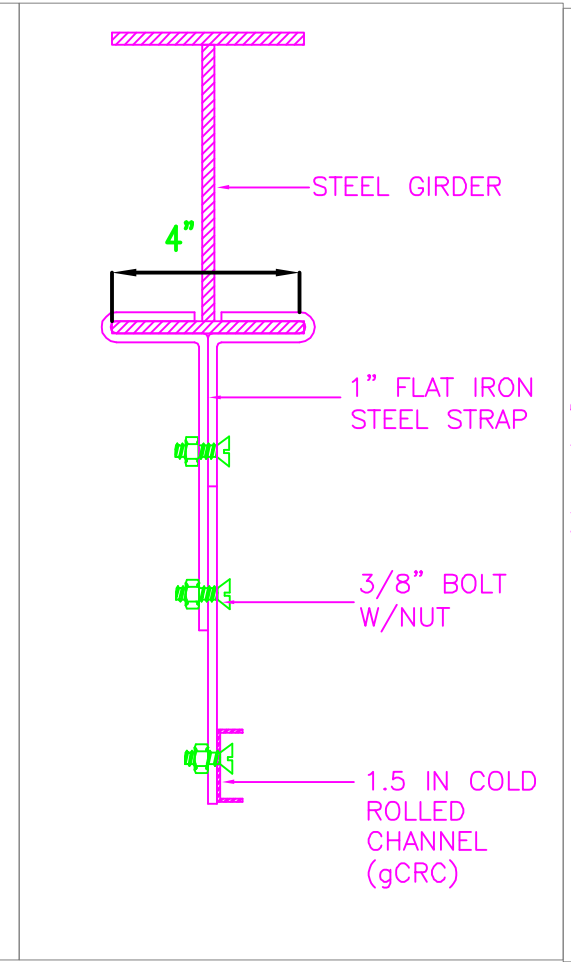
² ASTM C 635-07 minimum loading performance criteria for indirect hung main runners is 8.0 lbs/li/360 def/linear foot at action for Heavy Duty classification.



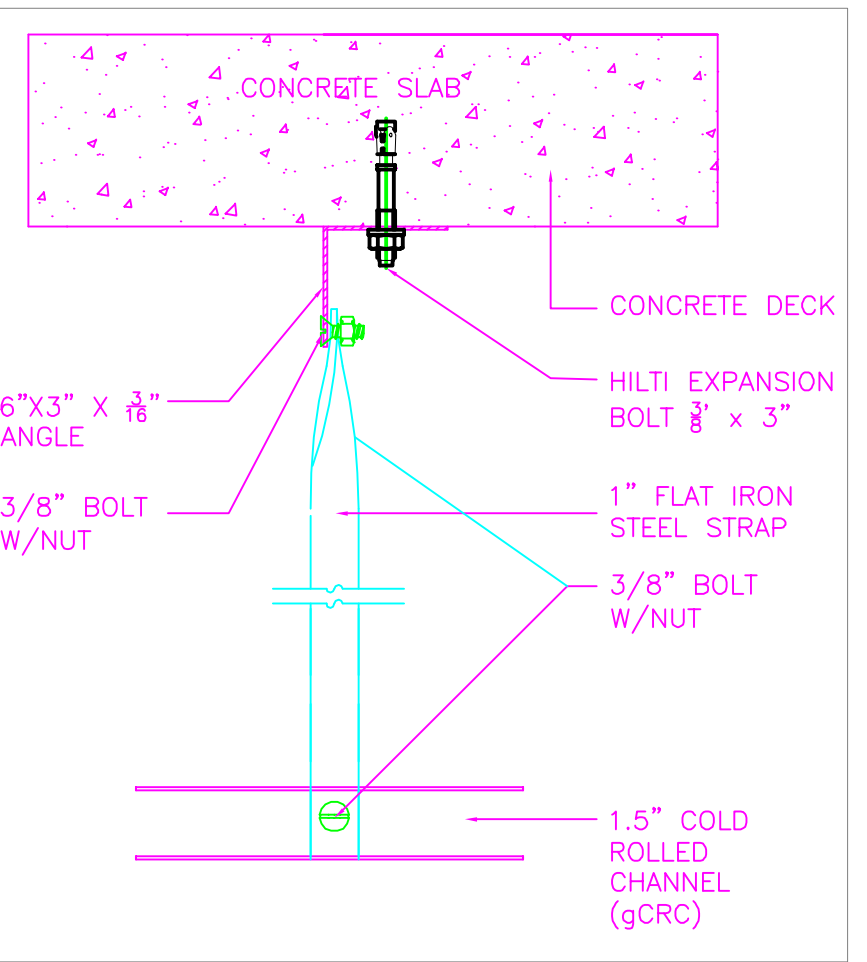
SUSPENSION SYSTEM WITH 2.0 IN C-CHANNEL WITH .025 IN PENCIL ROD AND CADDY CLIP SUSPENSION INDIRECT HUNG CLG. GRID ON STEEL GIRDER



SUSPENSION SYSTEM WITH 2.0 IN C-CHANNEL WITH .025 IN PENCIL ROD AND CADDY CLIP SUSPENSION INDIRECT HUNG CLG. GRID ON CONCRETE DECK W/RAMSET SHOT



SUSPENSION SYSTEM WITH 2.0 IN C-CHANNEL WITH .375 IN DIA. BOLT/1.0 IN STEEL STRAP SUSPENSION INDIRECT HUNG CLG. GRID ON STEEL GIRDER



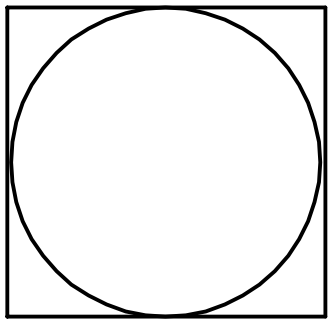
SUSPENSION SYSTEM WITH 2.0 IN C-CHANNEL WITH .375 IN DIA. BOLT/1.0 IN STEEL STRAP SUSPENSION INDIRECT HUNG CLG. GRID ON CONCRETE DECK W/ HILT EXPANSION BOLT



Project: LOCAL 46 gCRC
 Drawn By: JAFPC
 Checked By: JAFPC
 Drwg No: L46gCRC009
 Drwg Name: ASTM C 635 SUMMARY
 Date: 3-02-11
 Scale: 3" = 1'-0"

THESE CONSTRUCTION DOCUMENTS/DETAILS AND SPECIFICATIONS ARE PROPERTY OF LOCAL #46 METALLIC LATHERS UNION AND REINFORCING IRON WORKERS. THEY SHALL RETAIN ALL COMMON LAW, STATUTORY AND OTHER RESERVED RIGHTS, INCLUDING COPYRIGHT. THESE CONSTRUCTION DOCUMENTS SHALL NOT BE SHARED COPIED OR REPRODUCED WITHOUT WRITTEN APPROVAL FROM LOCAL #46 METALLIC LATHERS UNION AND REINFORCING IRON WORKERS.

LOCAL #46 METALLIC LATHERS UNION AND REINFORCING IRON WORKERS
 1322 THIRD AVENUE
 NEW YORK, NEW YORK 10021



gCRC
 009
 2.0" ASTM
 C635 SUMMARY